

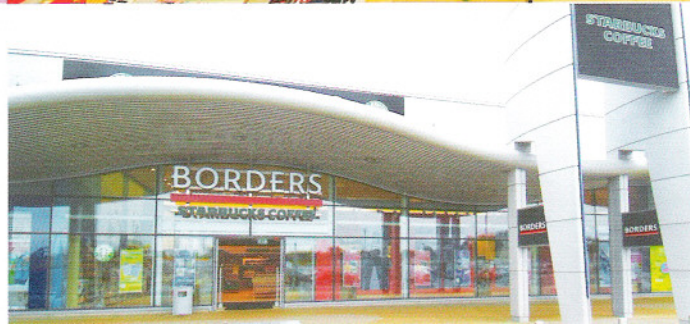
Borders Bookshop, Coventry

The stunning Borders retail outlet houses the latest in contemporary design to extend Borders UK market share in books, music and DVDs.

The external elevation and internal features acknowledge the city's history, with curved aerofoil wing details over the entrance and till areas.

The strong colour scheme defines the branded areas and helps the customer navigate through the shopping experience. This is the latest manifestation of the ongoing roll-out of stores within the UK for Borders, with 2006/2007 expected to repeat this delivery.

Architect:
Lewis & Hickey Ltd
Client:
Borders UK Ltd
Main Contractor:
Bridgefords



The strong colour scheme defines the branded areas...