

## Retail



## Fit Out of Outlet Store

With a development programme of up to ten stores a year, M&S first chose Bridgford Interiors in 2007 to manage and co-ordinate the fit out of premises at Crown Point, Colne & Meadowbank.

From this original workstream, Bridgfords have subsequently been involved with main chain initiative programmes and hospitality schemes including Cafes.

- With 50 Outlets located throughout the UK M&S are able to offer great products at incredible prices.
- The majority of lines are at least 30% off the original high street selling price.

**Client**  
Marks & Spencer

**Client Referee**  
Mr. David Ayres

**Project Manager**  
In-House

**Quantity Surveyor**  
Locus Cost Management

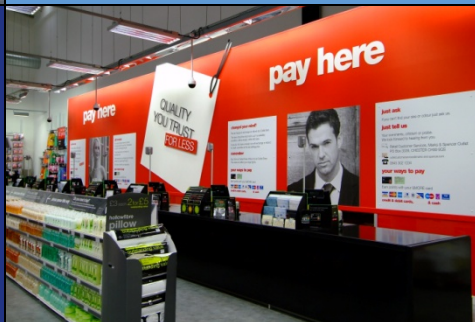
**Designer**  
In-House

**Relationship**  
Principal Contractor

**Number of Projects Completed**  
21

**Procurement Route**  
Framework

**Typical Programme**  
9 weeks



## Similar projects in this sector

<u>Client</u>	<u>Brief Work Description</u>
Loro Piana	Fit out of Outlet store at Bicester Village
TK Maxx	Fit out of store at Hatfield Galleria
BHS	Fit out of home store at Cheltenham
ASDA	Fit out of Living store at Tottenham, Dartford & Oxford
Primark	Re-Fit of trading store at Stevenage